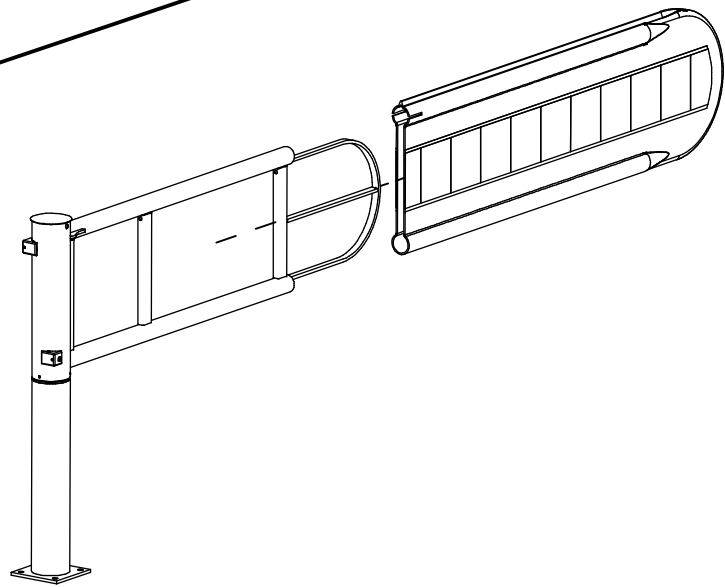
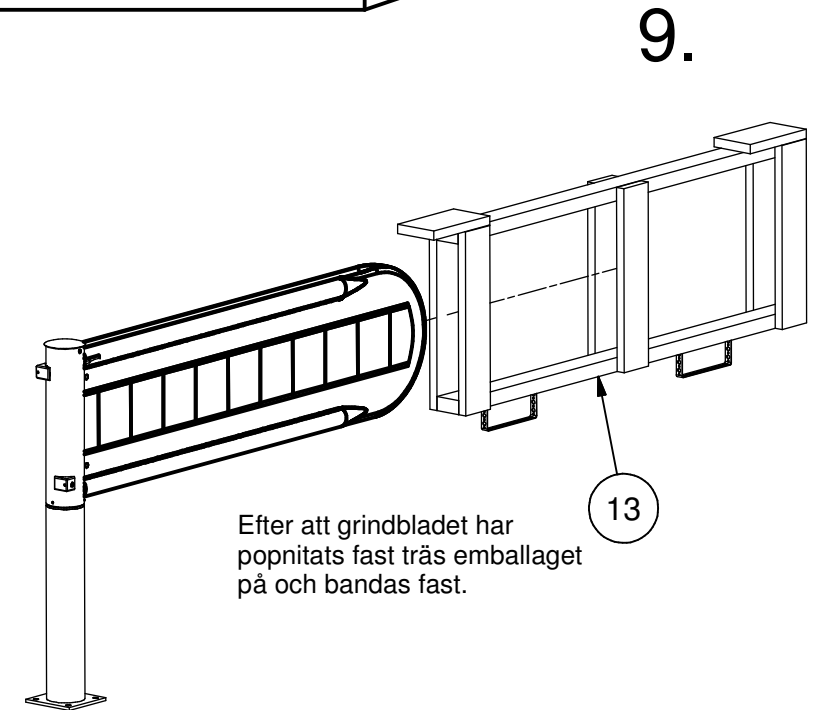
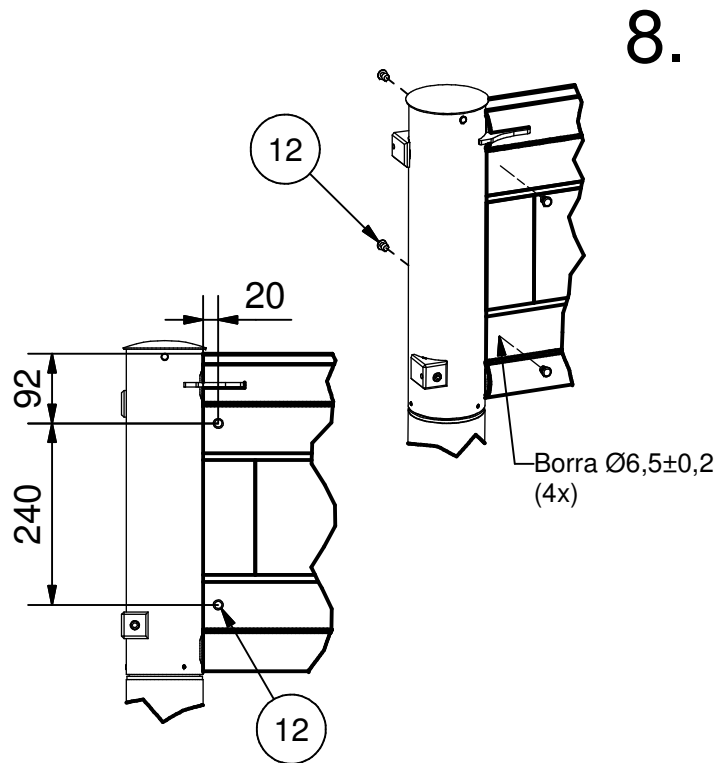
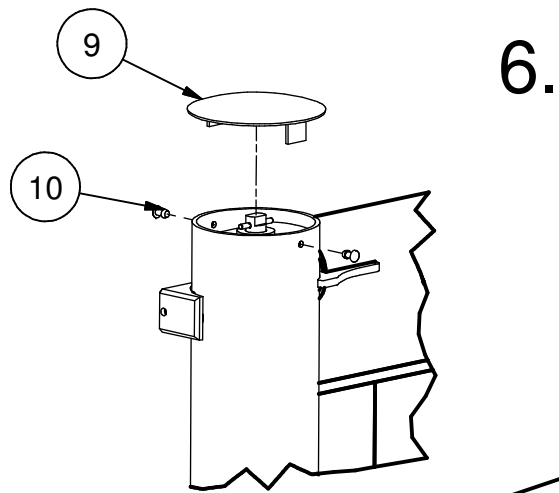
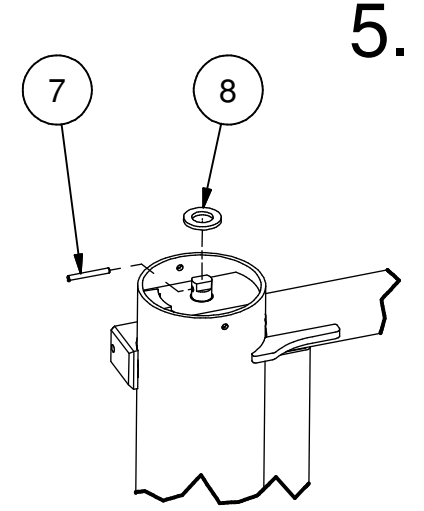
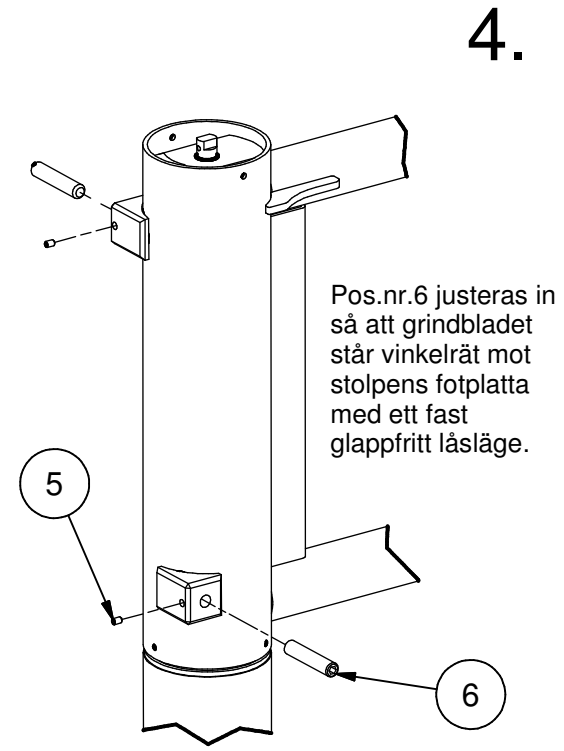
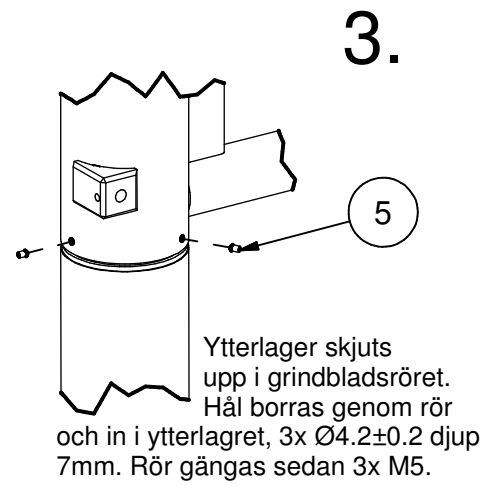
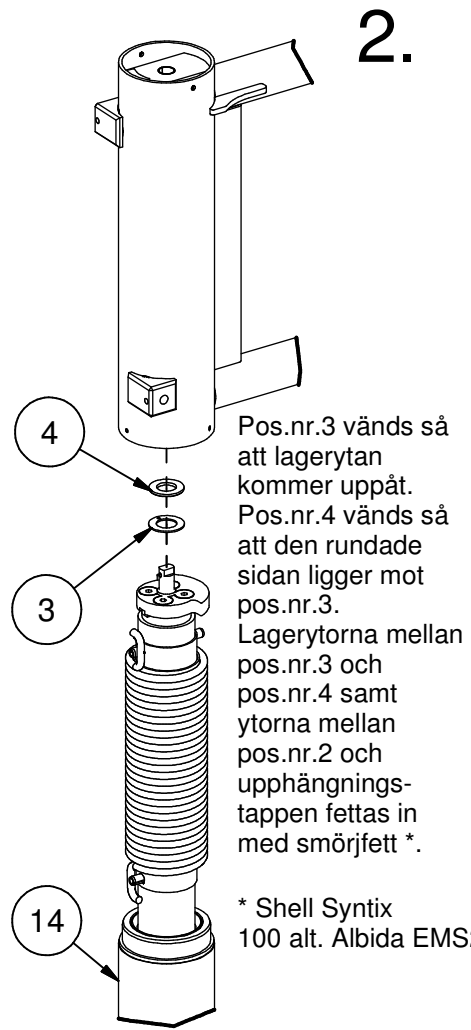
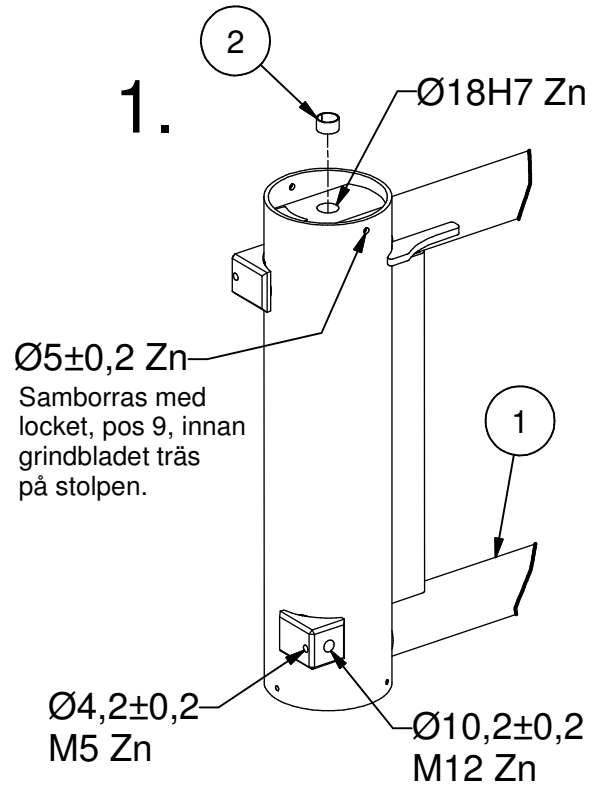
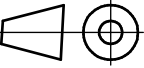


This document may constitute a contractual obligation on the part of SMEKAB AB only to the extent expressly agreed upon.

This document and its contents are the exclusive property of SMEKAB AB, and may not be copied, reproduced, transmitted or communicated to a third party, nor used for any purpose without written permission.



Benämning <b>Bilspärr, BIR SMST</b>					<b>SMEKAB</b> ÖNNESTAD SWEDEN		
First angle projection Method ISO E	Skala <b>1:6</b>	Konstr. SMEKAB	Ritad av TR	Datum 1999-09-23	Sida nr. 1	Antal sidor 2	Rev.nr. 8
Mallnr.	Format A3	Avdelning	Kontr. av	Kontr. datum	Ritning nr. <b>25-089</b>		

Nr.	Andring				Kontr.Dat.	Dat.Sign.
8	Ritn. överförd från AutoCAD. Pos 14 tillkom., vy 9 tillkom.				080305 JB	080305 JW
9	Pos 11 var 25-064.				080331 MT	080331 JW
14	1	Stolpe BIR			25-065	
13	1	Emballage BIR			50-561	
12	4	Popnit 6,4x12,7 Monel TLP/D				
11	1	Plastgrindblad BIR			25-090	
10	2	Popnit 4,8x19 TAP/D 617BS				
9	1	Lock BIR			25-082	
8	1	Bricka BRB 17,5x30x3 FZB				
7	1	Pinne RCP 4x35 FZB				
6	2	Stoppskruv DIN 916 - M12x60	A2			
5	5	Stoppskruv DIN 916 - M5x8	A4			
4	1	Bricka RB 21x37x3	A4			
3	1	Lager Frimet bricka Ø22				Eller motsv.
2	1	Lager Frimet raka 1610				Eller motsv.
1	1	Grindblad BIR			25-078	
Pos	Ant	Benämning	Material	Dimension	Ritn.nr.	Anmärkning
		Benämning <b>Bilspärr, BIR SMST</b>			<b>SMEKAB</b> ÖNNESTAD SWEDEN	
		First angle projection Method ISO E	Skala <b>1:6</b> Format <b>A4</b>	Konstr. SMEKAB Avdelning	Ritad av <b>TR</b> Kontr. av	Datum 1999-09-23 Kontr. datum
					Sida nr. <b>2</b>	Antal sidor <b>2</b> Rev.nr. <b>8</b>
		Mallnr.			Ritning nr. <b>25-089</b>	