

**lena**

lena



# lena

Products from this range demonstrate that the need for large volume litter bins does not necessarily exclude a stylish and modern design. The uniform base structure formed by a thick steel sheet ring raised over the terrain by a tube leg brings high resistance and easy installation even in hillside localities. Various types of sheathing also enable adjusting the appearance to its locality. The result is a universal litter bin whose design and structure can beautify any surroundings.

*Galvanized steel supporting frame painted in standard shade. Covering made of solid wooden lamellas, slotted or perforated galvanized steel sheet or stainless steel sheet. Side opening lockable door. Stainless steel cigarette extinguisher with ashtray. Galvanized steel inner bin. Anchoring to concrete base under pavement.*



lena





lena





lena





lena





lena





lena





lena





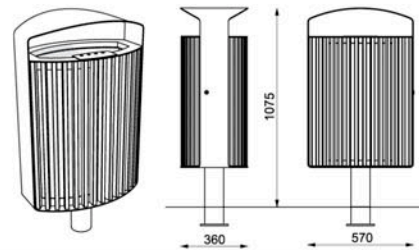
b – pine wood  
r – acacia wood  
t – tropical wood  
n – stainless steel


 for hanging on a wall

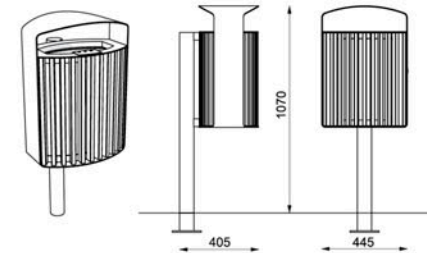
## LN115 / 116 / 515 / 516


### Litter bin with cover

steel frame, covered with wooden lamellas, with stainless steel cigarette extinguisher and ashtray



70l LN115b  
LN115r  
LN115t  
 LN116b  
LN116r  
LN116t

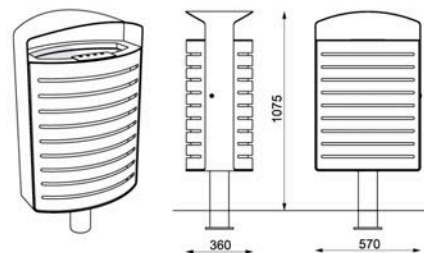


30l LN515b  
LN515r  
LN515t  
 LN516b  
LN516r  
LN516t

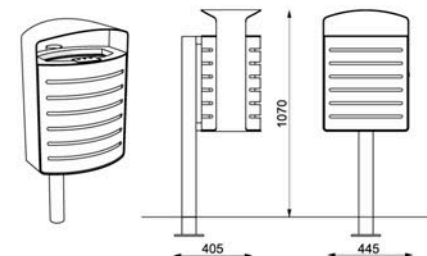
## LN125 / 126 / 525 / 526

### Litter bin with cover

steel frame, covered with slotted metal or stainless steel sheet, with stainless steel cigarette extinguisher and ashtray



70l LN125  
LN125n  
 LN126  
LN126n

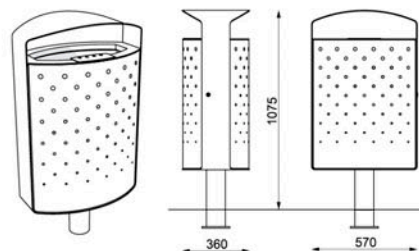


30l LN525  
LN525n  
 LN526  
LN526n

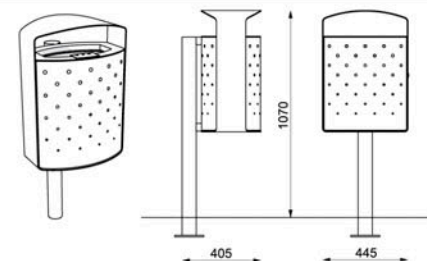
## LN135 / 136 / 535 / 536

### Litter bin with cover

steel frame, covered with perforated metal or stainless steel sheet, with stainless steel cigarette extinguisher and ashtray

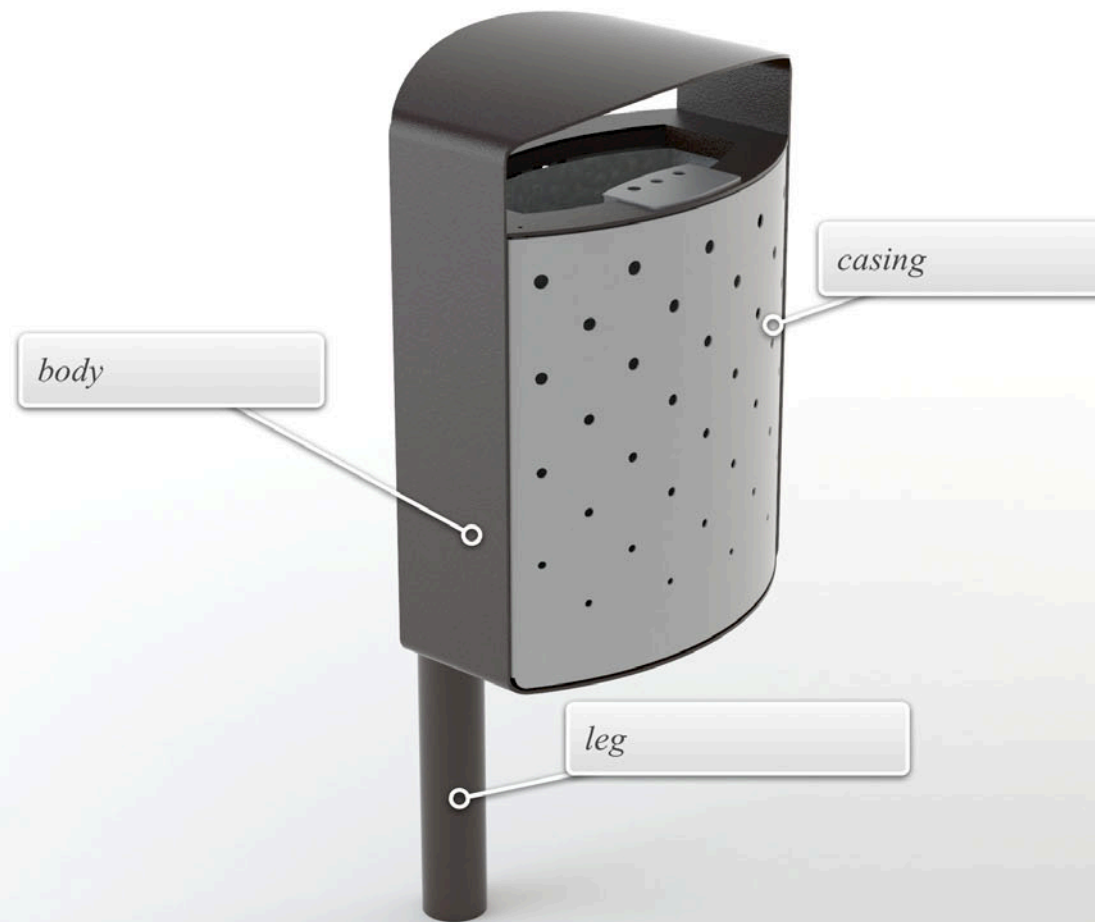


70l LN135  
LN135n  
 LN136  
LN136n



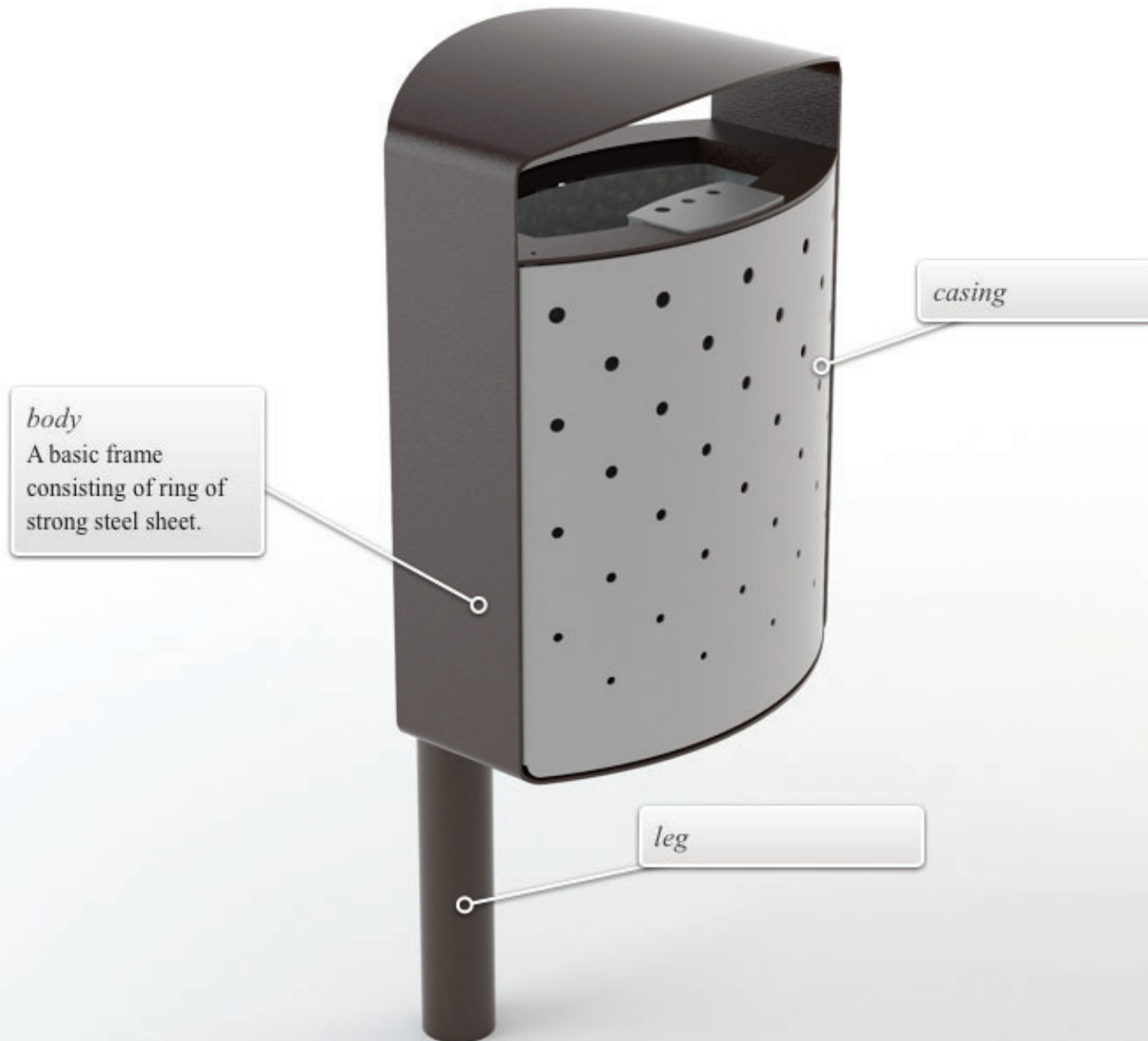
30l LN535  
LN535n  
 LN536  
LN536n

# lena





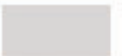
# lena



# lena



*casing*  
Various kinds of casing (wooden lamellas, perforated steel) enable to adapt the look to the location.



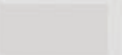


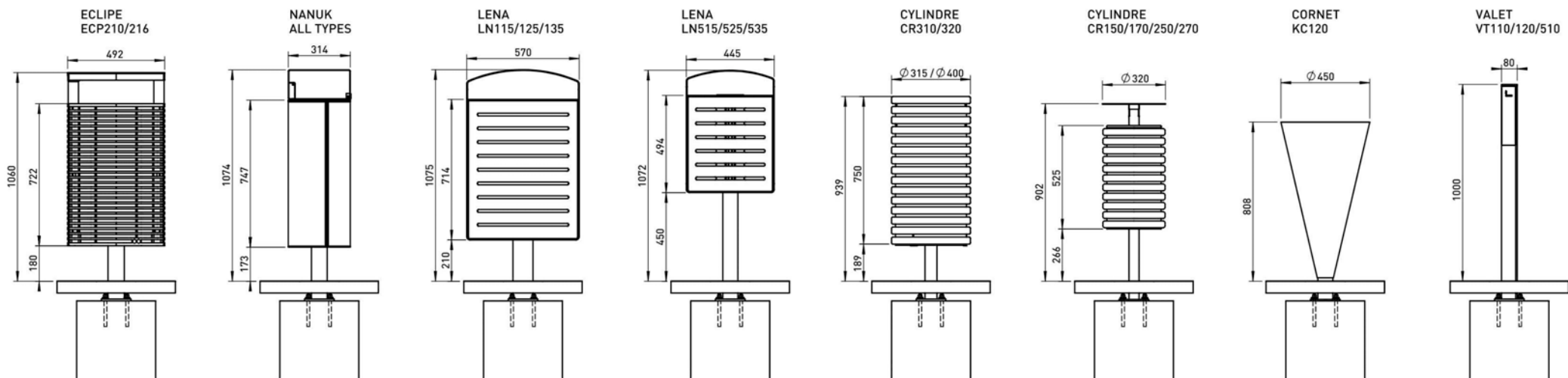
# lena



*leg*

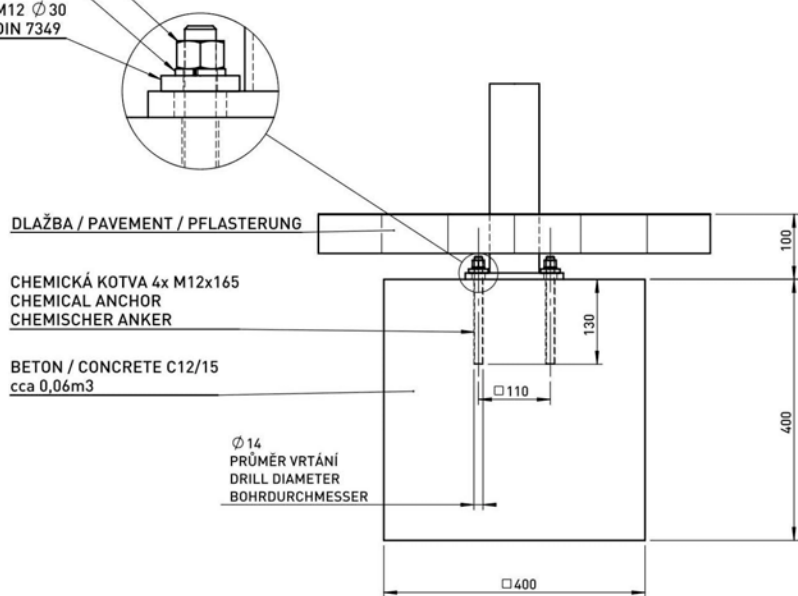
Tube leg eases  
maintenance and  
installation on the slopes.





M12  
DIN 934  
M12  
DIN 127 B  
M12  $\varnothing 30$   
DIN 7349

KOTVENÍ POD ÚROVŇÍ DLAŽBY NEBO TERÉNU  
ANCHORING UNDER THE PAVEMENT OR GROUND LEVEL  
VERANKERUNG UNTER PFLASTER - ODER TERRAINNIVEAU



TECHNICAL SPECIFICATIONS 3/5  
**TYP A - LITTER BINS**



Rozměry výrobků mají informativní charakter. Výrobce si vyhrazuje právo na změnu technické specifikace bez předchozího upozornění. Rozměry spodní stavby a způsob osazení výrobku jsou závazné. Rozteče kotvěv rozměřovat dle rozměrů dodaného výrobku.  
All product sizes have an informative character. The Producer reserves the right to amend the technical specification at any time without previous warning. The size of foundation baseplate and the method of mounting of the product are imperative. Anchor spacing measure out by measurements of supplied product.  
Die Abmessungen der Produkte sind informativ. Der Hersteller behält sich das Recht an Änderungen der technischen Spezifikationen vor, ohne vorher darauf hinzuweisen. Abmessungen der Fundamentierung - Unterbau und Art des Produkteinbaus sind verbindlich. Ankerabstand gemäß der gelieferten Produktabmessungen dimensionieren.